

Cromwells



All Saints Road, Sutton, SM1 3DB

£250,000

This two bedroom ground floor flat has the added benefits of a garage and communal gardens. It is situated in a convenient location, close to all the amenities of Sutton Town Centre, including a variety of shops, restaurants, gyms, other leisure facilities and transport links. It is a short walk from Sutton Common mainline railway station, with excellent links into Central London. Well regarded local schools include Westbourne Primary, Sutton Grammar School for Boys, Greenshaw High School and Glenthorne High School.
EPC rating C.

Accommodation

This ground floor apartment has a hallway with storage cupboard leading to the spacious reception room, one double bedroom, one single bedroom and a family bathroom. The kitchen leads off of the living area.

Outside

There are communal gardens and a garage in the garage court.





Council Tax - C
Tenure - Leasehold

54-56 High Street
Cheam Village
Surrey
SM3 8RW

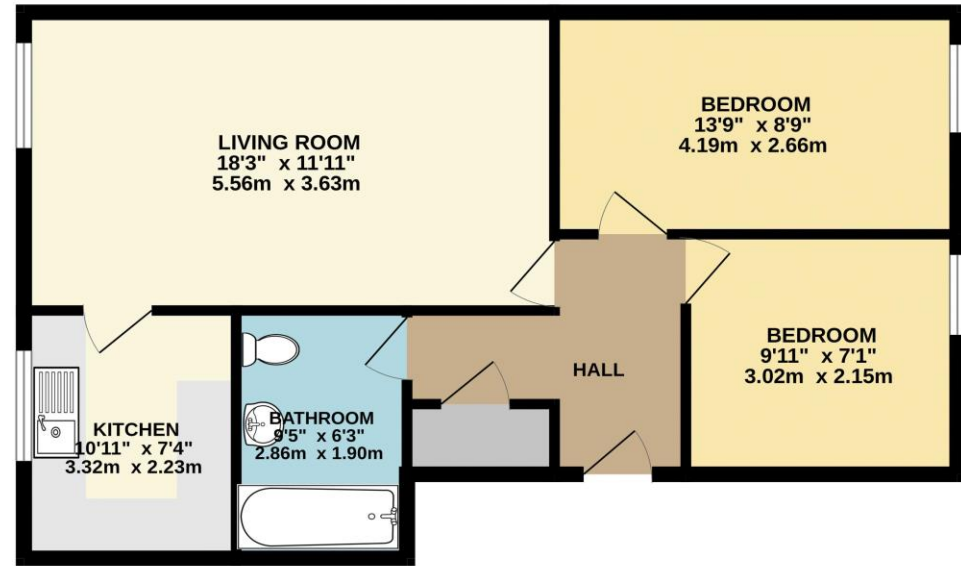
02086 424249
admin@cromwellscheam.co.uk

Disclaimer

These particulars are not an offer or contract, nor part of one. You should not rely on statements made by Cromwells in the particulars or by word of mouth or in writing ("information") as being factually accurate about the property, its condition or value. Neither

Cromwells nor any joint agent has authority to make representations about the property, and accordingly any information given is entirely without responsibility on the part of the agents, seller(s) or lessor(s). Photographs show only certain parts of the property as they appeared at the time they were taken. Areas, measurements and distances are given as an approximate only. Any reference to alterations to or use of, any part of the property does not mean that any necessary planning, building regulations or other consents have been obtained

GROUND FLOOR
640 sq.ft. (59.5 sq.m.) approx.



TOTAL FLOOR AREA : 640 sq.ft. (59.5 sq.m.) approx.
Whilst every attempt has been made to ensure the accuracy of the floorplan contained here, measurements of doors, windows, rooms and any other items are approximate and no responsibility is taken for any error, omission or mis-statement. This plan is for illustrative purposes only and should be used as such by any prospective purchaser. The services, systems and appliances shown have not been tested and no guarantee as to their operability or efficiency can be given.
Made with Metropix ©2023

Score	Energy rating	Current	Potential
92+	A		
81-91	B		
69-80	C	69 C	73 C
55-68	D		
39-54	E		
21-38	F		
1-20	G		



